



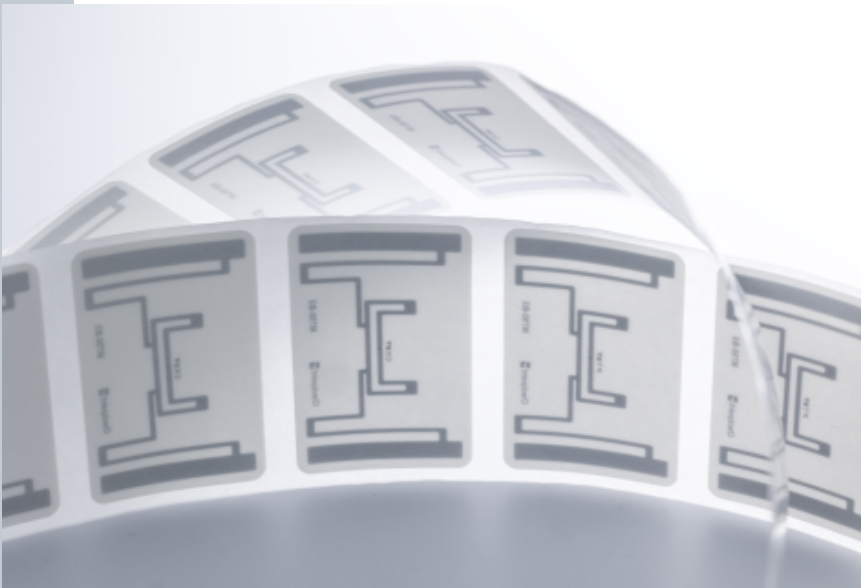
RFID Inlay Zephyr Impinj Monza M730

Dimensions (WxH)

50 mm X30 mm (1.95 “ X 1.17 “)

DESCRIPTION

ARC certified against many diverse specifications for uses across apparel and general merchandise retail. With strong read rates and easily integrated design, Zephyr offers merchandise visibility across the supply chain. Compatible with various hardware setups, including handhelds and overhead readers, Zephyr delivers a versatile RFID solution for heightened efficiency and precision.



RFID SPECIFICATIONS

| | |
|---------------------|------------------------------------------------------|
| Protocol | ISO/IEC 18000-63:2015 and EPCglobal Gen2v2 compliant |
| Operating Frequency | 860 Mhz - 960 Mhz |
| Chip Type | Monza M730 |
| Unique TID / UID | 96 bits |
| EPC Memory | 128 bits |
| User Memory | 0 bits |
| Tag type | UHF |

INDUSTRIES

| | |
|----------------|------------------|
| Retail Apparel | Retail Cosmetics |
|----------------|------------------|

APPLICATIONS



Inventory visibility



Omnichannel

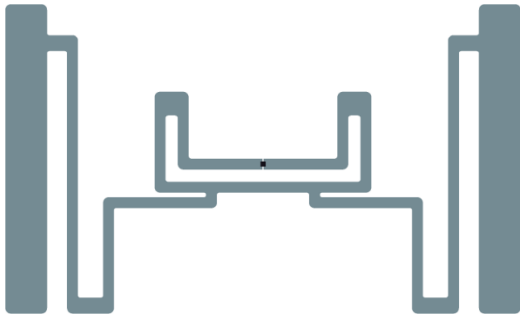


Store processs (Cycle Count /
item locator / POS)

ARC CATEGORIES

| | | |
|--------------|--------|---------|
| Spec L | Spec R | Spec I |
| Spec O | Spec F | SPEC Y2 |
| Spec I and F | Spec Q | Spec W5 |
| Spec W6 | | |

OTHER CERTIFICATIONS

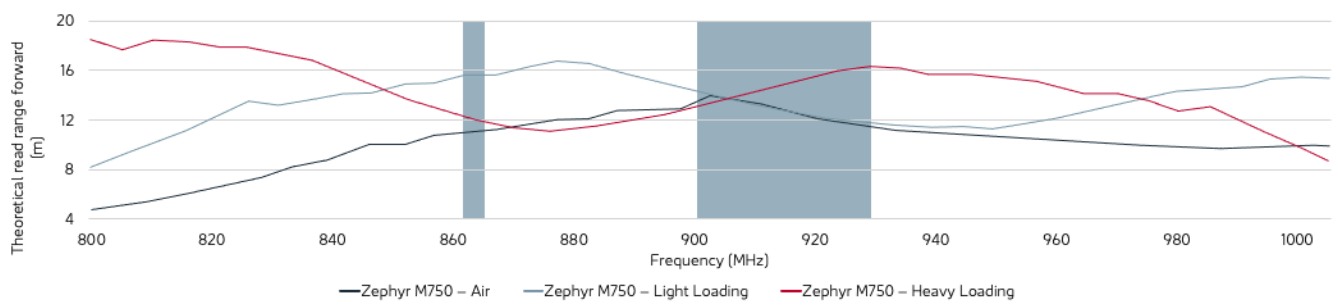


PERFORMANCE

| | |
|-----------------|---------|
| ETSI Read Range | 15.84 m |
| FCC Read Range | 12.54 m |

READ RANGE

Free Space, Light, & Heavy Loading Conditions



ORIENTATION SENSITIVITY

ETSI

FCC

