

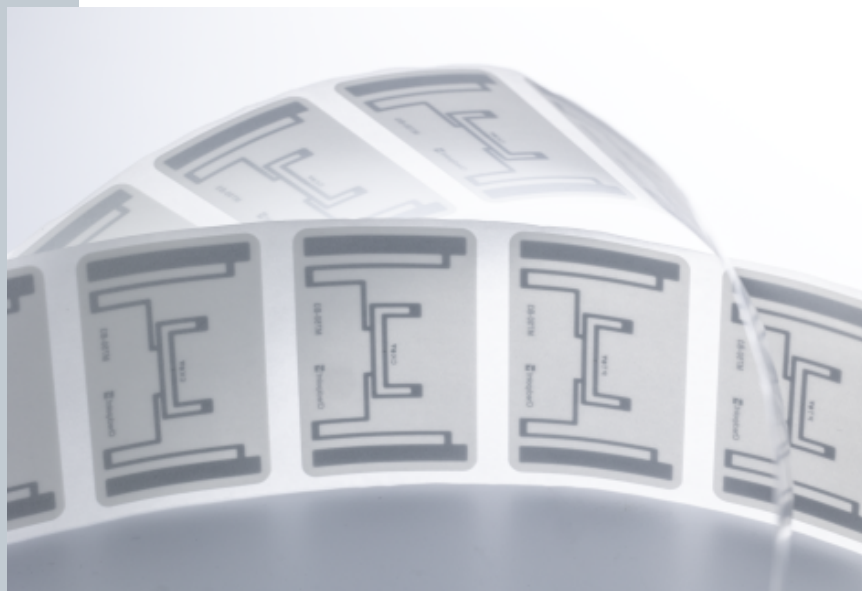
RFID Inlay Zephyr Impinj Monza M750

Dimensions (WxH)

50 mm X30 mm (1.95 " X 1.17 ")

DESCRIPTION

ARC certified against many diverse specifications for uses across apparel and general merchandise retail. With strong read rates and easily integrated design, Zephyr offers merchandise visibility across the supply chain. Compatible with various hardware setups, including handhelds and overhead readers, Zephyr delivers a versatile RFID solution for heightened efficiency and precision.



RFID SPECIFICATIONS

Protocol	ISO/IEC 18000-63:2015 and EPCglobal Gen2v2 compliant
Operating Frequency	860 Mhz - 960 Mhz
Chip Type	Monza M750
Unique TID / UID	96 bits
EPC Memory	96 bits
User Memory	32 bits
Tag type	UHF

INDUSTRIES

Retail Apparel Retail Cosmetics

APPLICATIONS



Inventory visibility



Omnichannel

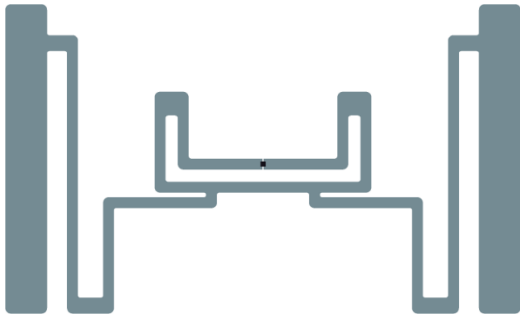


Store processes (Cycle Count / item locator / POS)

ARC CATEGORIES

Spec R	Spec I and F	Spec O
Spec Q	SPEC Y2	Spec L
Spec W5	Spec I	Spec W6
Spec F	Spec J	

OTHER CERTIFICATIONS

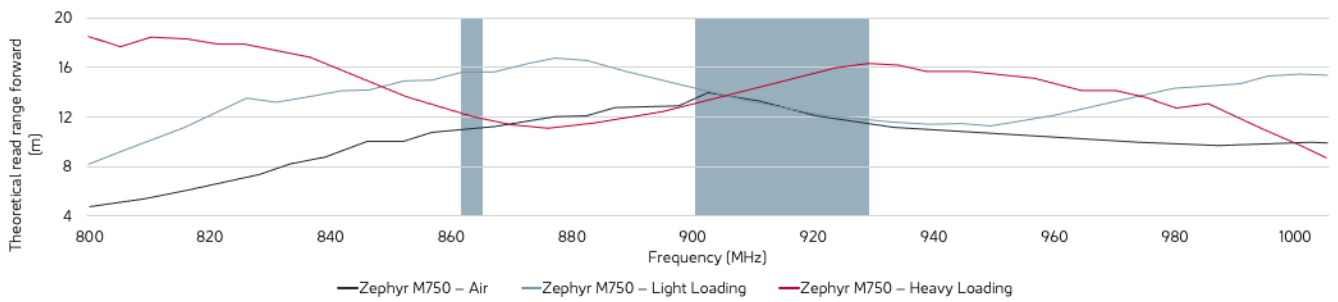


PERFORMANCE

ETSI Read Range	15.84 m
FCC Read Range	12.54 m

READ RANGE

Free Space, Light, & Heavy Loading Conditions



ORIENTATION SENSITIVITY

ETSI

FCC

