



RFID Inlay Vortex

NXP Ucode 9 XE

Dimensions (WxH)

42 mm X16 mm (1.638 “ X 0.624 “)

DESCRIPTION

Vortex is Checkpoint’s top-selling RFID inlay with a proven record of success amongst leading brands. With a small and efficient design, Vortex combines outstanding performance with versatility, being easily integrated into a wide range of products. An inlay of choice for merchandise visibility applications across a range of industries and sectors, Vortex is ISO1800-6C compliant and can be encoded and printed to carry EPC data in several formats including RFID EPC global protocol, printed bar code and human readable text.



RFID SPECIFICATIONS

Protocol	ISO/IEC 18000-6C/ EPC Class 1 Gen2
Operating Frequency	860 Mhz - 960 Mhz
Chip Type	Ucode 9 XE
Unique TID / UID	96 bits
EPC Memory	128 Bits
User Memory	No data
Tag type	UHF

INDUSTRIES

Retail Apparel	Retail Cosmetics
----------------	------------------

APPLICATIONS



Inventory visibility



Omnichannel

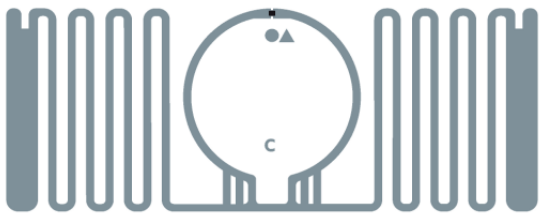


Store processs (Cycle Count /
item locator / POS)

ARC CATEGORIES

Spec Q

OTHER CERTIFICATIONS

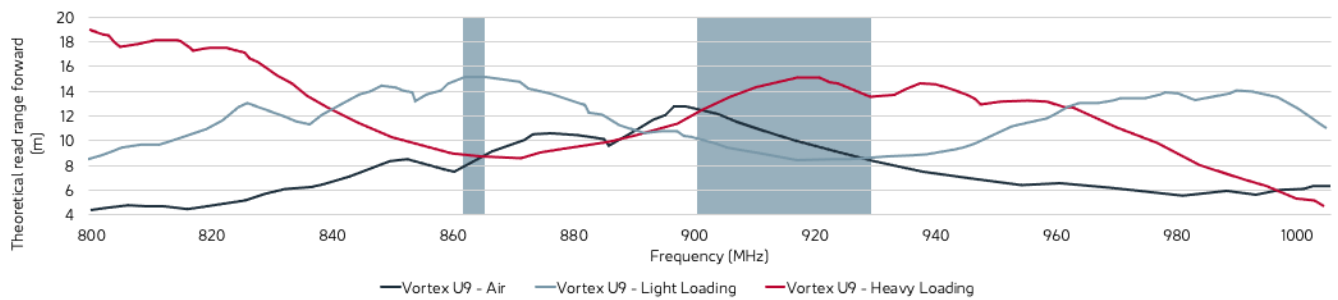


PERFORMANCE

ETSI Read Range	15.00 m
FCC Read Range	8.60 m

READ RANGE

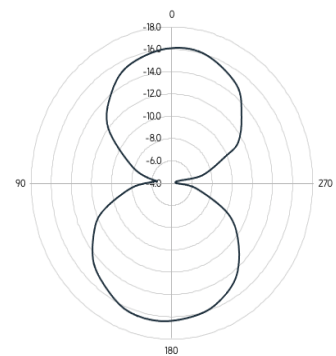
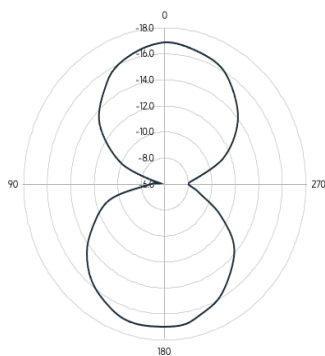
Free Space, Light, & Heavy Loading Conditions



ORIENTATION SENSITIVITY

ETSI

FCC



HANDLING GUIDELINES

Read our handling and best practice [guidelines](#)